

INSTALLATION INSTRUCTIONS

SEISCURB

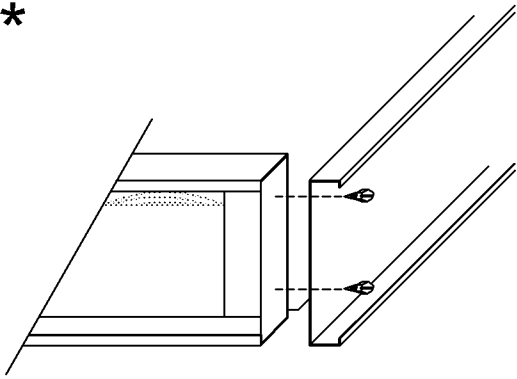
SEISMIC ROOF CURB

BY

NOVIA ASSOCIATES

11/12/04

1*

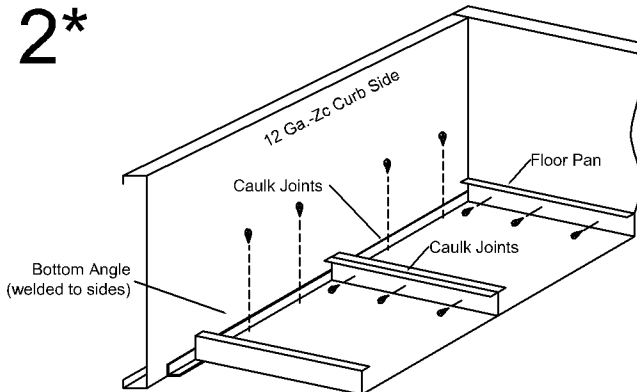


* ONLY FOR KNOCKED DOWN UNITS

ZIP SCREW ENDS TO SIDES WITH SCREWS PROVIDED.

NOTE: SIDES WILL BE MARKED WITH EITHER **COND. END** (CONDENSING UNIT) OR **S.A.** (SUPPLY AIR). BE SURE TO ORIENTATE THE CURB PROPERLY.

2*

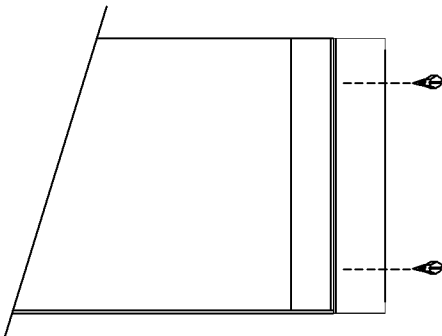


* ONLY FOR KNOCKED DOWN UNITS

PLACE FLOOR PANS (IF SUPPLIED) ON BOTTOM ANGLES AND USE SCREWS PROVIDED TO ATTACH TOGETHER AND AT ENDS. SCREW 6" FROM SIDES AND 12" O.C.

START AT CURB END FITTING ONE PAN AT A TIME AND FINISH AT PLENUM DIVIDER. CAULK ALL JOINTS.

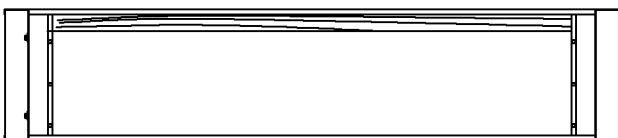
3*



INSTALL PLENUM DIVIDER OR CROSS BRACES AT LOCATIONS INDICATED ON SUBMITTAL WITH SCREWS PROVIDED.

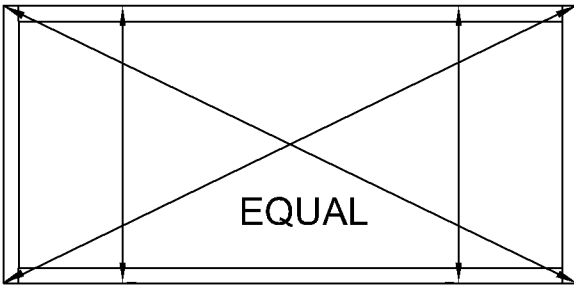
DO NOT TIGHTEN UNTIL CURB IS SQUARED & LEVELED.

4



LEVEL CURB. SEE RTU MANUFACTURER'S INSTALLATION INSTRUCTIONS FOR MAXIMUM TOLERANCE.

5



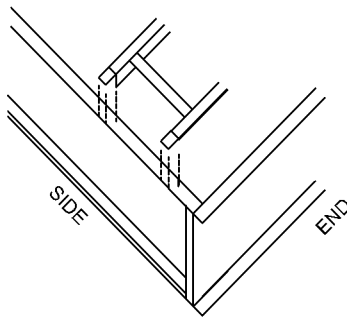
SQUARE UP CURB BY CHECKING DIAGONALS. TIGHTEN PLENUM DIVIDER OR CROSS BRACES TO KEEP SIDES STRAIGHT.

CURB MAY NOW BE ATTACHED TO THE STRUCTURE. SEE SUBMITTAL FOR TIE DOWN OPTIONS.

Curb to Structure:

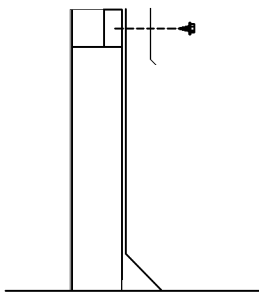
If wood blocking is used, the minimum blocking width must be equal to or greater than the maximum blocking height or additional anchors may be required. If this condition cannot be met contact NAI with maximum blocking height and minimum width prior to installation.

6



IF SUPPLIED, SLIP PRE-ASSEMBLED DUCT SUPPORTS AND/OR SOUND BARRIER PACKAGE OVER TOP FLANGE. ALIGN AS NOTED ON SUBMITTAL DRAWING.

7



INSULATE CURB AND APPLY ROOFING MEMBRANE. INSTALL 3" FLASHING OVER ROOFING. ATTACH TO WOOD NAILER WITH ZIP SCREWS.

UNIT CAN NOW BE RIGGED ONTO CURB.