



Novia Associates, Inc.
 1 Northwestern Dr.
 Salem, NH 03079
 Ph: 603-898-8600
 Fax: 603-898-2755
 email: info@noviaassociates.com

PROJECT: _____

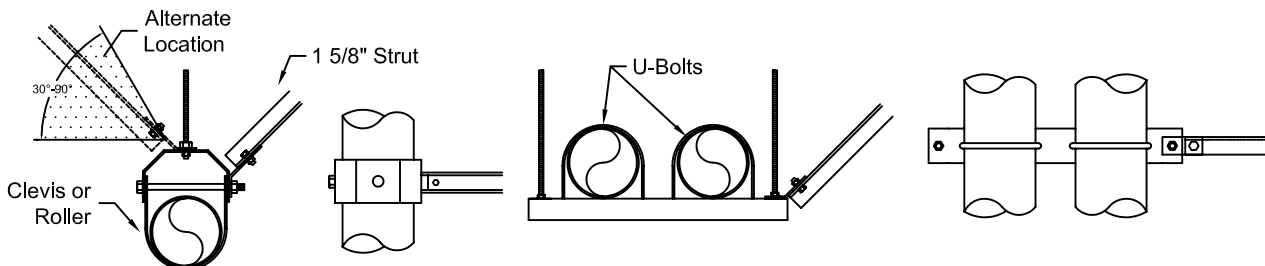
CUSTOMER: _____

**Single Strut
 Seismic
 Restraint
 Types 4, 5, & 6**

SD-PIPE 4-5-6 12/06/06

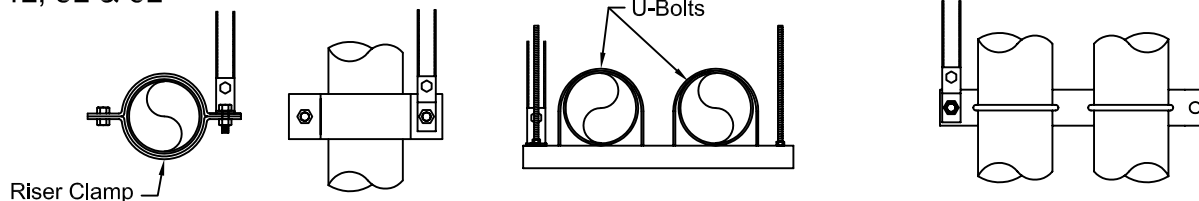
Transverse Types:

4T, 5T & 6T



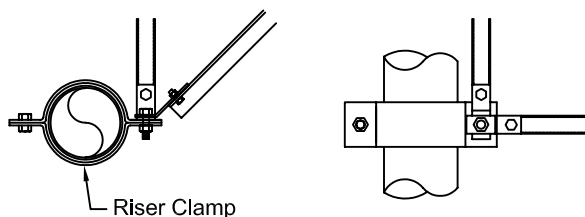
Longitudinal Types:

4L, 5L & 6L

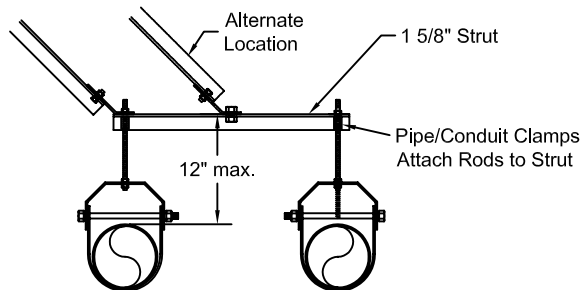


Transverse & Longitudinal Types:

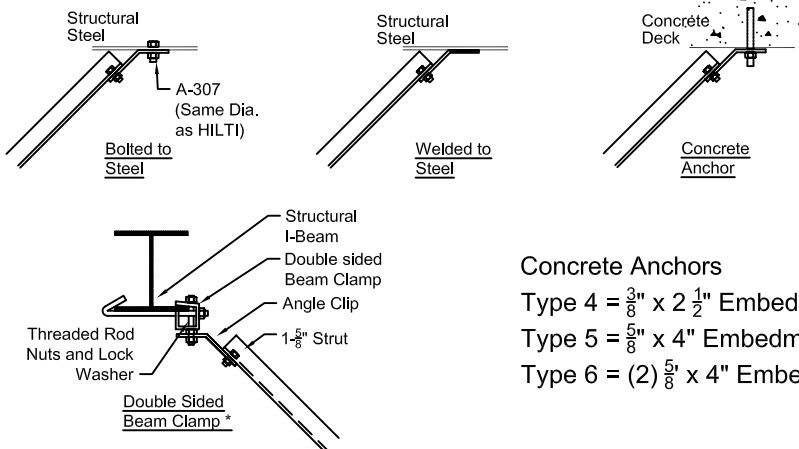
4T/L, 5T/L & 6T/L



Multiple (Restrained by a single restraint)



Attachment to Structure Details

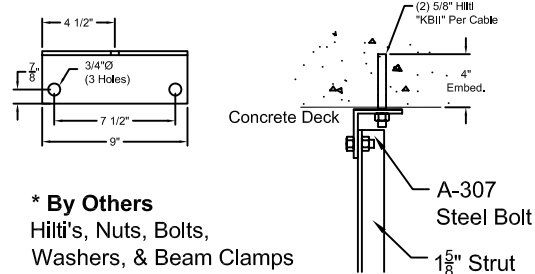


Concrete Anchors

- Type 4 = $\frac{3}{8}$ " x $2\frac{1}{2}$ " Embedment
- Type 5 = $\frac{5}{8}$ " x 4" Embedment
- Type 6 = (2) $\frac{5}{8}$ " x 4" Embedment

Notes:

- 1) For Restraint Type 6 use (1) L3 x 3 x 9" $\frac{1}{4}$ " Angle at connection to structure instead of 45° angle clip.
- 2) Maximum Strut Length = 10'-0"
- 3) Strut to Clip Bolt Dia.
 Type 4 & 5 = $\frac{1}{2}$ "
 Type 6 = $\frac{5}{8}$ "



*** By Others**
 Hilti's, Nuts, Bolts,
 Washers, & Beam Clamps

Type 6

BY: _____

DATE: _____

DWG#: _____